

Item No: 5C
Meeting: 2/2/2023

Premier Transport, Inc. Lease Assignment 2235 Ross Way

Shannon Bartlett
Real Estate Manager
Port of Tacoma

February 2, 2023



Action Request



Request Commission approval for the Executive Director or his designee to execute a lease assignment from Premier Transport, Inc. to Portland Container Repair Corporation located at 2235 Ross Way, Tacoma, WA.

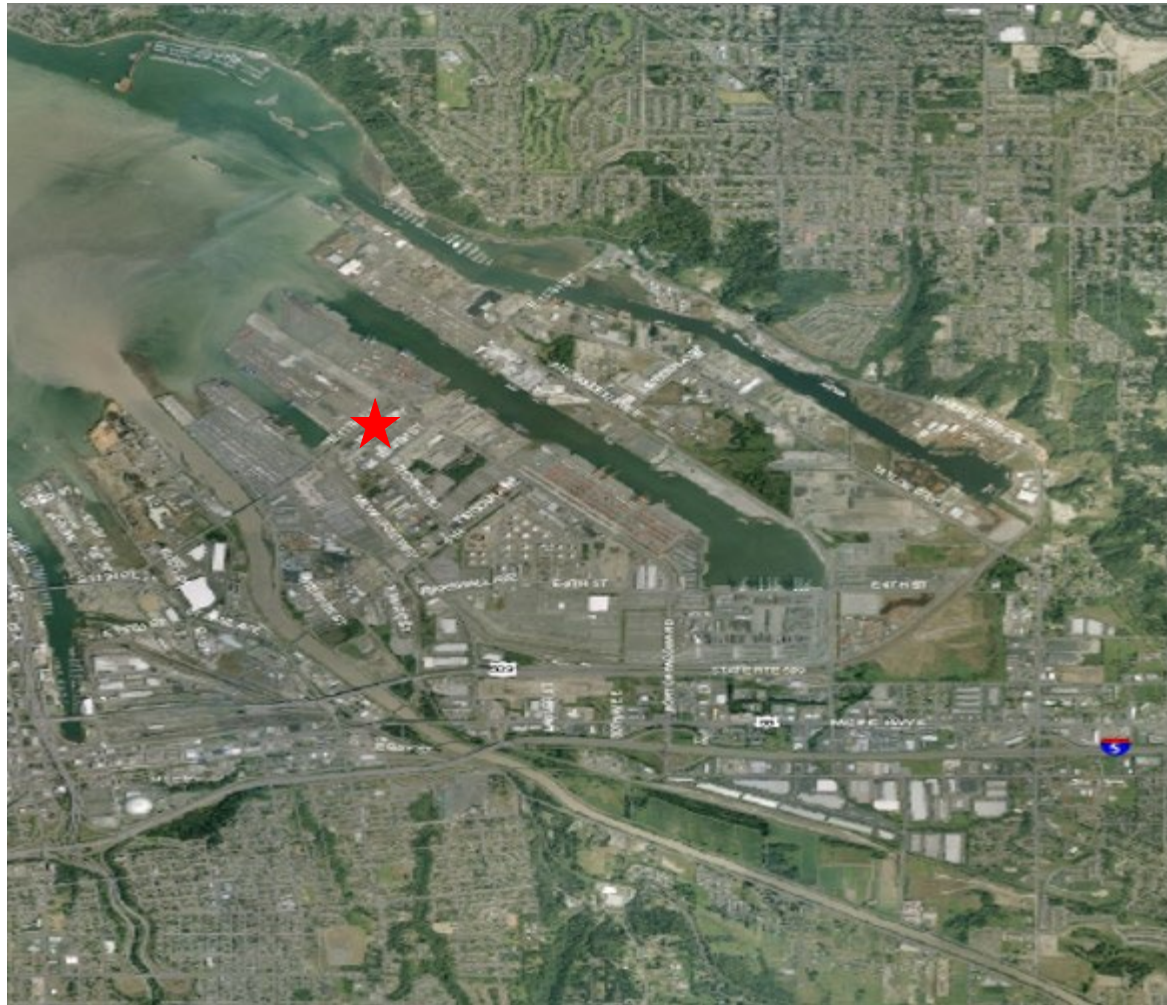


Background

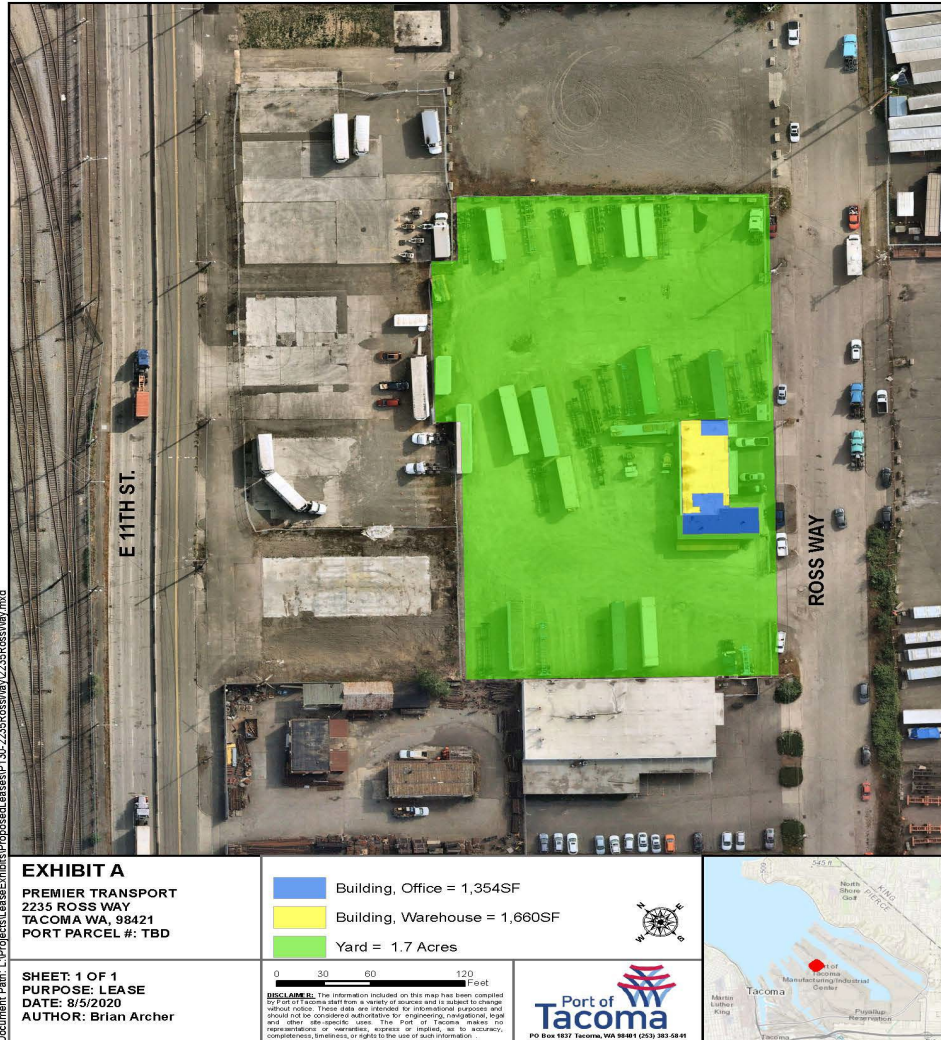


- The Port acquired 2235 Ross Way in November 2020.
- Premier Transport, Inc. currently has a lease located at 2235 Ross Way which includes approximately 1,354 sf of office, 1,660 sf of warehouse, and 1.7 acres of yard space. This lease term lasts through November 5, 2023, and it provides for two, one-year extensions by mutual written approval of both parties. Premier Transport has been leasing for two years and there have been no compliance issues.
- Premier Transport, Inc. and Portland Container Repair Corporation entities are owned and controlled by the same person. There is no change in ownership or management.
- The Commission approved Premier Transport's lease on October 29, 2020.

Premier Transport, Inc. Lease Location



Premier Transport, Inc. Lease Premises



Action Request



Request Commission approval for the Executive Director or his designee to execute a lease assignment from Premier Transport, Inc. to Portland Container Repair Corporation located at 2235 Ross Way, Tacoma, WA.